

## e<sup>2</sup> series: Description and functions

### Preface

This information is primarily aimed at users of the e<sup>2</sup>. We assume that the device and possible additional ventilation components have been installed and put into operation by a specialist.

We also assume that it is known which ventilation units or additional components have been installed and where and how they are connected.



The e<sup>2</sup>s are ventilators with heat recovery, which are installed in the living rooms and possibly also in the kitchen where they provide for constant air exchange to renew consumed and humid air.

The following explanations refer to devices with the universal control of LUNOS in conjunction with the series switch.

### Operation and function

#### Operation of the series switch

The fans are switched by means of a series switch which is located in the living area or in the hallway.

A total of 4 stages can be selected by pressing the switch rockers.



When both switch rockers point downwards (see illustration), Stage 0 is active. This usually means that the fans are running continuously at a very low stage or that they are switched off (setting of the control).

If the left-hand switch rocker is pressed and the right-hand rocker stays in the aforementioned position, the fan runs at Stage I. If the right-hand rocker is switched upwards and the left-hand rocker remains down, Stage II is active. If both rockers point upwards, Stage III is switched on.

#### Airflow volume

Depending on the device type, the e<sup>2</sup>s can operate in different airflow volumes in the heat recovery mode; (the air direction changes approximately every 70 seconds). These values were calculated in the ventilation concept. The installer, architect or planner can answer relevant questions.

We recommend that the units be run continuously at a low stage and, when required, switched to the higher stages.

#### Summer ventilation

This function is specially designed for the cooler night hours in high summer. The reversing times are significantly increased to approx. 1 hour, i.e. heat recovery is bypassed and the cool outside air can enter the heated rooms and passively cool them.

To activate this function, the right-hand switch rocker must be rapidly switched back and forth twice within 3 seconds. You can deactivate this function at any time by switching the right-hand switch rocker back and forth twice again. After 8 hours this function is automatically deactivated and the normal reversing time (approx. 70 seconds) is restored.

## e<sup>2</sup> series: Description and functions

### Operation and function

#### Humidity control

When this function is selected and Stage 0 is activated, the fan automatically exchanges the air at varying flow levels.

This function is indicated on the switch by a green LED flashing at an interval of approx. 15 seconds.

#### Filter change

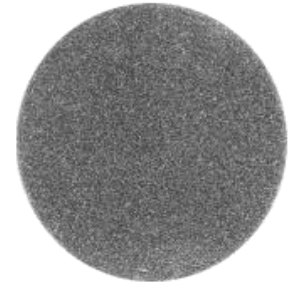
A continuous red light of the LED on the switch indicates that a filter change is to be carried out.

To do this, remove the cover of the inner screen, take the filter out and clean it in the dishwasher or with water and detergent. Then reinsert the dry filter into the filter frame carrier and reengage the cover of the inner screen in the "open" position.

Our regenerable filters can easily be cleaned 4-5 times without any problems, before they have to be replaced. The pollen filters can only be cleaned with a vacuum cleaner or you can use new filters.

To reset the filter change indicator, actuate the left switch rocker by rapidly switching back and forth within 2 seconds.

If you want to clean the filter before the red LED lights up, you can of course do this. In order to restart the cleaning interval, you are required to actuate the left switch rocker by rapidly switching back and forth three times within 3 seconds.



#### Maintenance

Please remove the ventilators regularly (at least before and after the heating period) from the wall and wipe off all surfaces with a damp cloth. You can use a vacuum cleaner to clean the heat exchanger and fan.

#### Disconnection of the devices

If the devices are to be switched off for an extended period of time, close the inner screens and remove all filters.

In the event of downtimes longer than 6 months, please have all devices professionally serviced.