

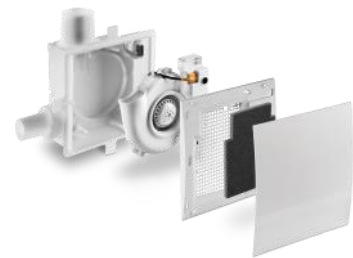
## Silvento ec: Description and functions

### General information

This information is primarily intended for users of Silvento ec. We assume that the devices and any additional ventilation components have been installed and commissioned by a specialist.

We also assume that it is known which ventilation units or additional components have been installed and where and how they are connected.

The Silvento ec is an exhaust fan which will ensure that the used and humid air in functional rooms such as the kitchen, bathroom and toilet is transported outside directly via the outside wall or via an exhaust air duct.



### Operation and function

In pure exhaust air systems, with the associated passive external wall air diffusers in the living rooms, these fans run permanently on a base load and can possibly also be switched to the so-called demand ventilation level.

If devices with heat recovery (e<sup>2</sup> or Ne<sup>x</sup>t) have been installed in your living rooms, these fans are switched off and can only be switched on when required or used.

#### Silvento ec with base board

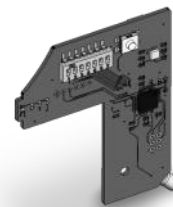
The switchable devices can be coupled via the light switch, separately switchable with an on/off switch or equipped with our motion detector.

The Silvento ec has eight ventilation stages between 0 and 60 m<sup>3</sup>/h, one basic ventilation stage and one demand ventilation stage. In addition, time lag, interval switching and switch-on delay can be activated. The values of the basic and/or demand ventilation were calculated in the ventilation concept; the installer, architect or planner can answer your questions.

#### Silvento ec with Comfort Board

If the Comfort Board is installed, the fan has an infinitely variable comfort humidity temperature control in addition to the functions of the Basic Board. Humidity control is fully automatic and the fan does not have to have an additional switch. Nevertheless, it is possible for comfort reasons that a switch for activating the demand ventilation and / or lowering mode is installed.

Please ask your installer, architect or planner.



#### Functions of the Silvento ec and the red LED on the inside panel

During initial commissioning and after a power failure, the operating capability is indicated by a short flash (1, 2 or 3 times, depending on the software version).

#### Interval operation

If devices with heat recovery are installed in the living rooms, the Interval function can be activated. When interval operation is switched on, the interval counter triggers a fan start every 4 or 2 hours after the fan was last switched off. The ventilation duration is then 30 or 15 minutes.

## Silvento ec: Description and functions

### Operation and function

#### Switch-on delay

During the switch-on delay, the red LED can pulsate, depending on the programming. This setting can be changed by a specialist company/installer.

#### Follow-up time

Depending on the activation, a follow-up time of 15 or 30 minutes can be activated.

#### Frost protection switch-off

If the room temperature drops below 8°C for longer than 1 hour, the fan is switched off. If a temperature of 15°C is exceeded, the fan switches on again. This function is intended to prevent the rooms from continuing to be ventilated in the event of a defect or failure of the heating system and to prevent a further drop in temperature.

#### Filter change

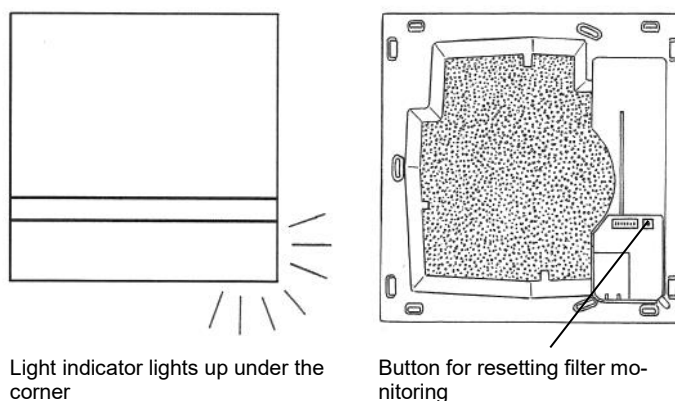
A forthcoming filter change is signalled by a permanent red light on the LED.

To do this, remove the cover of the inner screen, remove the filter and clean it in the dishwasher or with water and detergent. You can then insert the dry filter back into the filter frame carrier and snap the cover of the inner panel back into place.

Our regenerable filters can easily be cleaned 4-5 times before they should be replaced.

To reset the filter change indicator, press the button for 3 seconds. The LED goes out.

If you would like to clean the filter before the red LED lights up, you are of course welcome to do so. To restart the cleaning interval, press the button for 15 seconds.



#### Shutting down the devices

In case of downtimes of more than 6 months, please have all devices serviced professionally.