

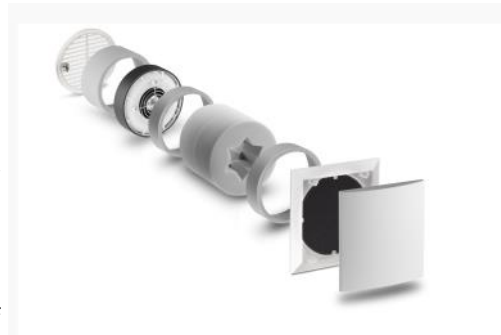
## RA 15-60: Description and functions

### General information

This information is primarily intended for the user of the RA 15-60. We assume that the unit and any additional ventilation components have been installed and commissioned by a specialist. We also assume that it is known which ventilation units or additional components have been installed and where and how they are connected.

The RA 15-60 is an exhaust air unit which has been installed in the functional rooms such as the kitchen, bathroom and toilet of your apartment or house. These units will ensure that used and moisture-laden air is transported to the outside.

The following versions refer to the connection with the universal controller from LUNOS in conjunction with the series switch.



### Description and functions

Since there are units with heat recovery in your living rooms, these exhaust air units are only in operation when required.

#### Operating the series switch

The fans are switched via a series switch located in your bathroom, kitchen or WC.

A total of 4 levels can be selected by actuating the rocker switches:



- If both rocker switches point downwards (see illustration), level 0 is active. This means that the fans are off.
- If the left rocker switch is actuated and the right rocker switch remains in the above-mentioned position, the fan is running at level I. The fan is in the "OFF" position.
- If the right rocker switch is switched up and the left rocker switch remains down, level II is active.
- If both rockers point upwards the III. stage is switched on.

#### Volume flow

The RA 15-60 can discharge 15, 30, 45 or 60 m<sup>3</sup>/h as required. This value was calculated in the ventilation concept. The installer, architect or planner can answer your questions.

#### After-run

After switching back to level 0, the fan continues to run for a further 15 or 30 minutes (control setting).

#### Interval operation

When interval operation is switched on, the interval counter triggers a fan start every 4 or 2 hours after the fan was last switched off. The ventilation duration is then 30 or 15 minutes.

#### Humidity control

If this function is selected and level 0 is activated, the fan automatically removes the air in different volume levels.

This function is indicated by a flashing green LED at intervals of approx. 15 seconds at the switch.

### Operation and function

#### Filter change

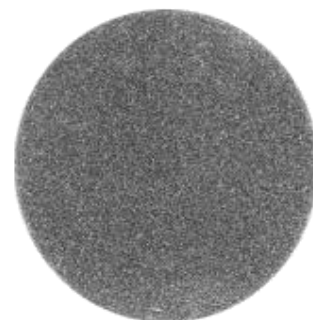
If a filter change is to be carried out, this is indicated by the LED on the switch lighting up continuously in red.

To do this, remove the cover of the inner screen, remove the filter and clean it in the dishwasher or with water and soap. You can then insert the dry filter back into the filter frame carrier and snap the cover of the inner screen back into the "open" position.

Our regenerable filters can easily be cleaned 4-5 times before they should be replaced. The pollen filters can only be cleaned with a vacuum cleaner or you can use new filters.

To reset the filter change indicator, quickly switch the left rocker switch back and forth within 3 seconds.

If you wish to clean the filter before the red LED lights up, you are of course welcome to do so. To restart the cleaning interval, the left rocker switch must be quickly switched back and forth three times within 3 seconds.



#### Maintenance

Please remove the ventilation units from the wall regularly (at the latest before and after the heating period) and wipe all surfaces with a damp cloth. You can use a vacuum cleaner to clean the fan.

#### Shutting down the units

If the units are to be switched off for a longer period of time, close the inner covers and remove all filters. In case of downtimes of more than 6 months, please have all units professionally serviced.